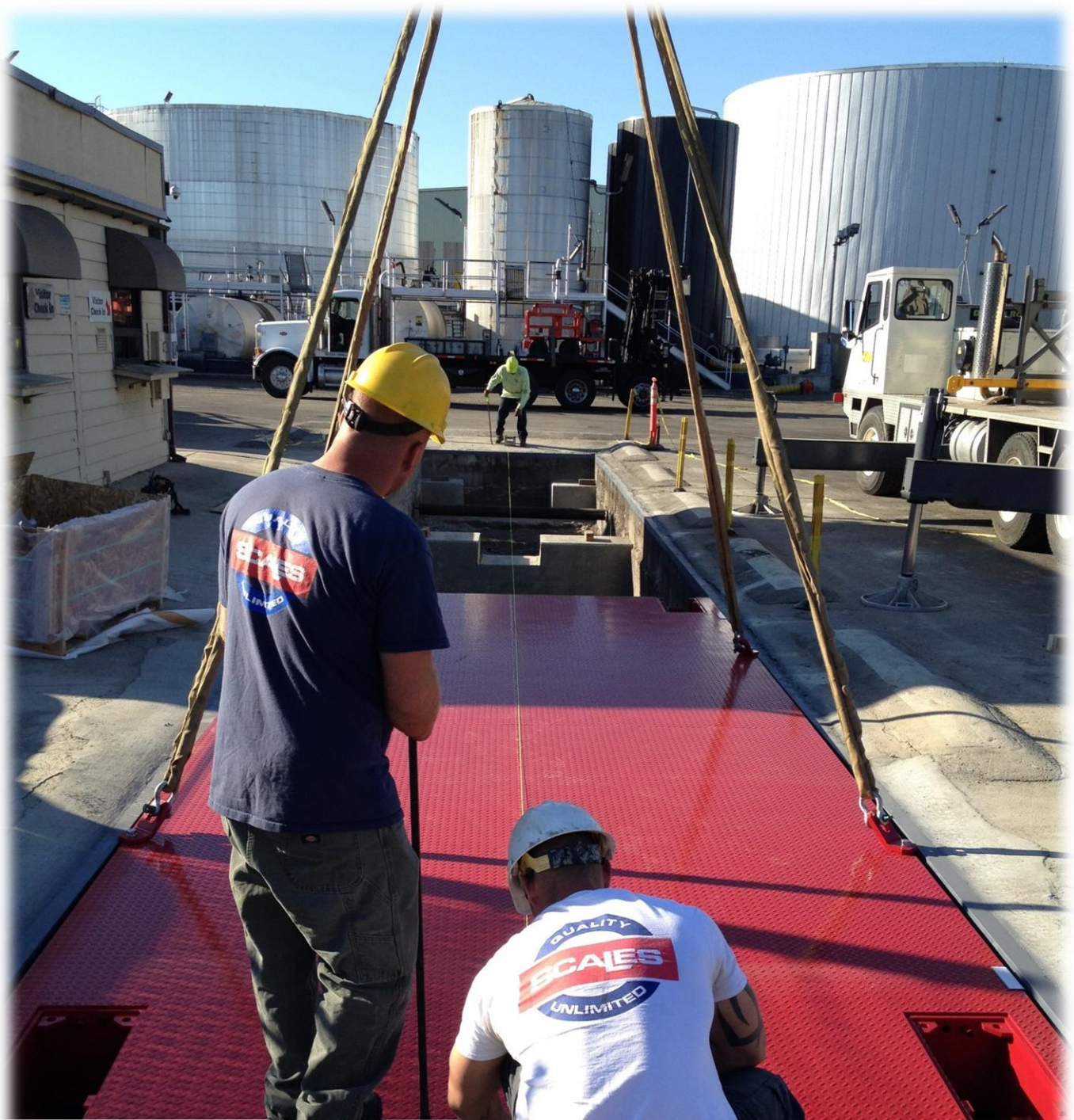


Quality Scales Unlimited – 5401 Byron Hot Springs Road, Byron CA 94514



Monterey Regional Waste
14201 Del Monte Blvd
Marina, CA 93933

Attn: David Ramirez



Quality Scales Unlimited
(925) 634-8068
5401 Byron Hot Springs Rd
Byron, CA 94514

Presented By: Chris Devlin



5401 Byron Hot Springs Road, Byron, CA 94514 ph: 925-634-8068

October 24, 2024

Quote #D1637

Monterey Regional Waste Management

14201 Del Monte Blvd
Marina, CA 93933

Attention: David Ramirez

831-261-2153

dramirez@mrwmd.org

Subject: Rice Lake 70' x 10' OTR Truck Scale for Lane C

Dear Mr. Ramirez,



Thank you for allowing Quality Scales Unlimited to provide this proposal covering your weighing requirements. We look forward to working closely with you to assure your complete satisfaction.

As requested, this quote is for a new Rice Lake OTR 70' by 10' steel deck truck scale to be installed in the existing pit at your Marina, CA location. This scale quote is turn-key and includes existing scale removal, all scale components, and installation. We have provided a condition report on this scale.

We firmly believe that Rice Lake truck scales are the best in terms of quality and value. This is supported by the fact that Rice Lake sells more truck scales in the US than any other manufacturer. While there may be cheaper scales available, none can match the reliability or longevity of Rice Lake scales. Below, we outline some of the reasons behind our strong opinion of Rice Lake truck scales. Additionally, later in this quote you will find detailed technical information about the superiority of the Rice Lake design.

The OTR scale utilizes a full electronic design using industry standard load cells, as opposed to proprietary load cells offered by other manufacturers. The design choice ensures that replacement parts for Rice Lake scales are readily available from various manufacturers, allowing for competitively priced replacements throughout the scale's lifetime. Furthermore, any scale company can service a new Rice Lake truck scale without voiding the five-year warranty. It's worth noting that many of our customers who have us install truck scales also choose to have us service them. Rice Lake offers to extend the warranty to 12 years, subject to semi-annual service from the selling dealer.

This Rice Lake scale we propose is rated for loads up to 100 tons and has been tested for Concentrated Load Capacities up to 100,000 pounds, making it one of the heaviest duty designs in the industry. Compared to scales offered by other manufacturers, the Rice Lake OTR steel-deck scale contains an additional 8,500 pounds of steel.

Another significant advantage of the Rice Lake scale is its single link suspension system, which eliminates the need for check rods and/or bumper bolts. Unlike other manufacturers, Rice Lake does not require checking systems to restrict the scale's movement and prevent tipping off its load cells or limit the impact when vehicles enter and exit the scale. Check rods and/or bumper bolts typically require seasonal adjustments due to thermal changes throughout the year.

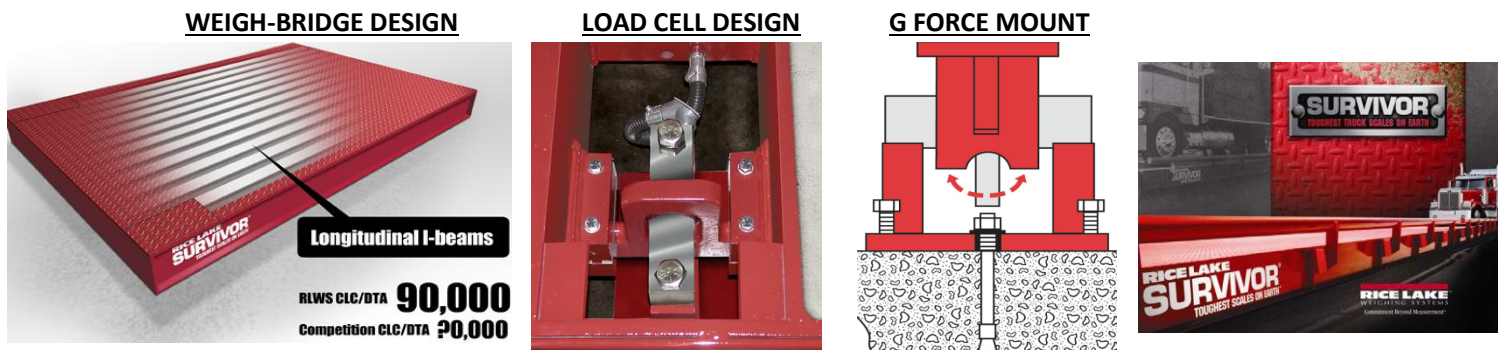
Project Scope: The first step in installing your new truck scale is to remove the existing Weightronix truck scale. Once the scale has been removed, we will need Monterey Regional's help to clean the scale pit. **Monterey Regional Waste will be responsible for disposing of old Weightronix scale and spoils from cleaning.** After removal, we will install the new scale and reconnect instrumentation. We estimate disconnecting equipment, removing the old scale, and preparing the pit will take one day. The new scale installation, reconnecting instrumentation, and formatting of the auxiliary equipment will take another day. **Please note, we will start this project on a Saturday at noon disconnecting the old scale and preparing for removal. The following Sunday we will return to pull the old scale and assist with moving panels, install the new truck scale and reconnect instrumentation. After installation, we will test and calibrate the scale. Your scale will be operational as soon as the calibration is complete. We have performed this quick installation process many times with great success.**

Proposal Pricing Scope: Included in our quote is pricing for a new Rice Lake 70' x 10' pit-style 3/8" steel deck truck scale, with some additional customizations we think could benefit your facility. We have modified the scale's links and blocks to be tapered. The tapered links and blocks help the scale re-center after having lateral force applied to the scale as trucks exit the scale and turn sharply. The force of the trucks leaving the scale can cause the scale to shift and push against one side of the scale pit over time. The tapered links and blocks help the scale recenter after each weighment. We have also included three manholes to improve pit-access for cleaning, maintenance, ventilation, and confined space safety.

In addition to the scale, included in our quote is pricing for the truck to transport the scale, a crane to offload the truck scale panels, and installation. We have also included time on site for the crane and truck to help Monterey Regional move the old scale panels from the scale pit to the disposal site.

We have kept this quote simple and quoted just the scale and the most popular options. Quality Scales Unlimited has specialized in the service and installation of heavy capacity scales, having sold, and installed, more than 575 in our 42 years. We are the largest scale company in Northern California, with 24 technicians and 12 heavy capacity test trucks. Following is our proposal covering the new scale, instrumentation, freight, and installation.

Rice Lake OTR Pit Style Truck Scale Proposal



Rice Lake Weighing Systems 70' x 10' OTR

- Configured with a 3/8" steel deck
- Full electronic low profile truck scale
- Minimum Capacity
 - 100 tons gross capacity
 - 50 tons Concentrated Load Capacity (CLC)
 - Individual Load cell Capacity: 75,000 lb. each
- Construction: Double ended shear beam type load cell design with checking to allow for truck dynamics and side loading without damage to critical parts of the scale
- Weighbridge deck construction: Steel deck with I-beams on 10-inch centers
- G-FORCE Mount assembly with forged suspension link
- Scale includes factory installed conduit runs for interconnecting cables from the load cells to waterproof j-boxes
- Load cells include continuous cables which require no splices and have no connectors between the load cell body to the waterproof summing Junction Boxes
- Top access provided to all components for ease of installation and maintenance
- All non-visible steel surfaces coated with moisture protective asphalt emulsion
- All exposed steel is shop primed with rust resistant primer and painted with an acrylic enamel finish

Recent Rice Lake Truck Scales Installations

- **Waste Management – San Leandro (Davis St.) – New Rice Lake Pit OTR Truck Scale (June 2023)**
- **Republic Services – Pittsburg (Keller Canyon) – New Rice Lake Pit OTR Truck Scale (December 2023)**
- **Republic Services – Martinez (Contra Costa Transfer) – New Rice Lake Pit OTR Truck Scale (December 2023)**
- **Waste Connections – Placerville (El Dorado Disposal) – New Rice Lake Portable ATV & Above Ground OTR (2023)**

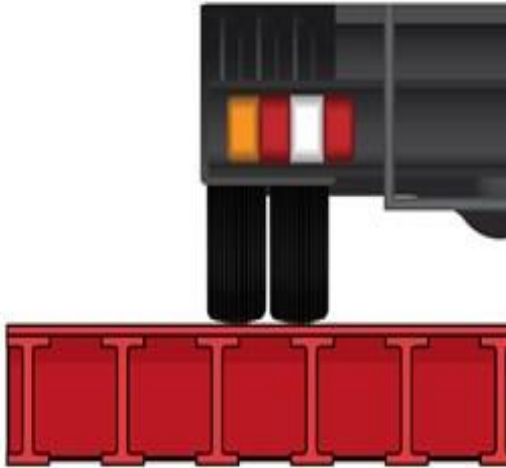
We can provide more references. These are the most recent that relate to the same industry

Uncompromising SURVIVOR Strength

Selecting a steel deck truck scale means choosing a long-lasting, quick-to-install scale. The SURVIVOR OTR steel deck is designed to reduce downtime by simplifying installation and maintenance.

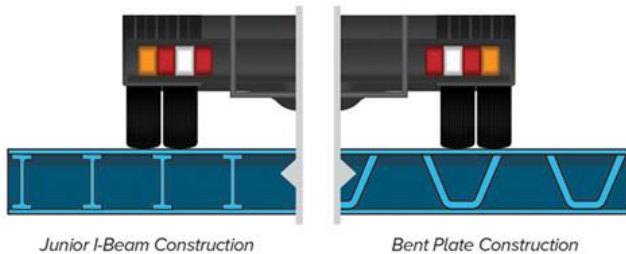
Reliable Steel Deck Design

SURVIVOR scales incorporate more longitudinal beams than other manufacturers to better support the weighbridge and ensure structural stress remains below fatigue limits during deflection. This design supports vehicle tires across the entire weighbridge deck.



Competitor Designs

Most other manufacturers use fewer I-beams or bent-channel beams to reduce the initial scale cost. However, these designs reduce structural integrity, causing greater deflection—shortening the lifespan of the weighbridge. Additionally, some designs require top and bottom deck plates, trapping corrosion-causing moisture inside the weighbridge.



Freight Expense

- Cost of shipping scale from point of manufacture to your installation site plus assistance with moving old scale panels

Crane

- To remove existing scale and set new truck scale panels onto the foundation plus assistance with moving and disposal of old scale panels



Removal of Old Scale

- Disconnect the existing equipment
- Remove old scale panels from scale pit
- Load old scale panels on waiting flatbed truck
- Assist with offloading old scale at the disposal site
- Preparing existing scale pit for installation of new scale



Installation

- Placing new scale panels on existing foundation
- Wiring load cells and anchoring scale to foundation
- Reconnecting to existing instrumentation - including up to 75' of load cell cable
- Testing and calibration with our test truck



Pricing for the Rice Lake Pit Truck Scale follows:

<u>Item</u>	<u>Cost</u>
Rice Lake 70' x 10' OTR Truck Scale w/ (3) Manholes + 3/8" Steel Deck	\$92,995.00
Freight Expense (from Fernley, NV)	\$3,275.00
Crane to Install Scale (Sunday Service)	\$6,395.00
Additional Materials: Cable, Hardware, etc.	\$1,135.00
Installation Labor (Saturday & Sunday Service)	\$15,500.00
	Subtotal: \$119,300.00
	Estimated Sales Tax: \$8,708.00
	Total: \$128,008.00

The Rice Lake truck scale has a 5-year warranty on its structural and electronic components

Rice Lake now offers an optional Twelve (12) Year Limited Warranty on their Survivor Vehicle Scales. This warranty covers weighbridges, suspension components, load cells, junction boxes, and weight indicators. To be eligible for this twelve-year warranty, you must have a bi-annual inspection and calibration service contract with Quality Scales Unlimited. Proof of each inspection and calibration must be included with any warranty claim. Failure to secure and implement a twelve-year service contract between the dealer performing installation and the end user will void this warranty.

All prices quoted are based upon the following payment terms and are subject to all applicable taxes: 30% deposit with confirmation of order and the balance due 30 days after installation is complete. Quote pricing valid for thirty (30) days from date of proposal. Pricing valid for thirty (30) days from the date of proposal. Upon receipt of purchase order, delivery will take place in 2-3 months.

Pricing does not include:

- Applicable Sales Tax
- Building permits or "Wet Stamped" Engineered drawings or related costs (Pricing available upon request)
- Spoils removal
- 110 VAC power to locations where scale instrumentation (indicator, remote displays, printer) will be installed
- Scale house for the scale operator, where the indicator will be installed (must be in place prior to the installation)
- Railing or catwalks
- Soil testing
- Change orders caused by underground obstacles or hazards found during excavation
- Pipe rerouting
- Trenching and conduit
- Any additional items not specifically defined in this proposal

Quality Scales Unlimited is not responsible for the property after it is on site at Monterey Regional Waste Management. Quality Scales Unlimited will do its best to stick to the agreed upon schedule, but we are not responsible for manufacturing delays, delays due to weather, delays due to site preparation, delays due to lack of power, delays due to theft, and other delays due to factors outside of our control.

Quality Scales Unlimited is dedicated to achieving customer satisfaction by providing quality products and excellent service. We value the fact that our customers are completely satisfied years after their purchase as they have enjoyed reliable operation. Satisfied customers are our best source of advertising. Our technicians are highly experienced and trained, and they are the reason our service department has a reputation with our customers and with government regulators as being the best available.

Once again, thank you for allowing Quality Scales Unlimited to submit this quotation, and we look forward to working closely with you to ensure your complete satisfaction. If you have any questions, please call me. In addition, please let me know when you would like me to come to your site to review this proposal.

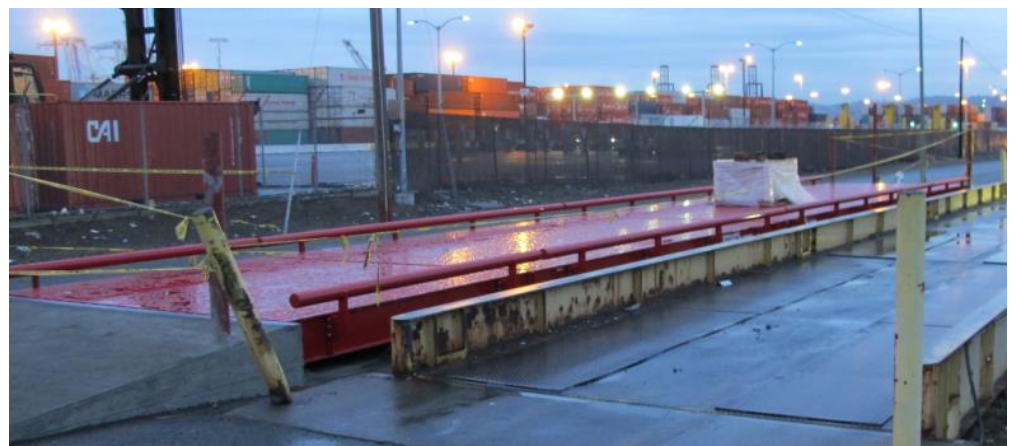
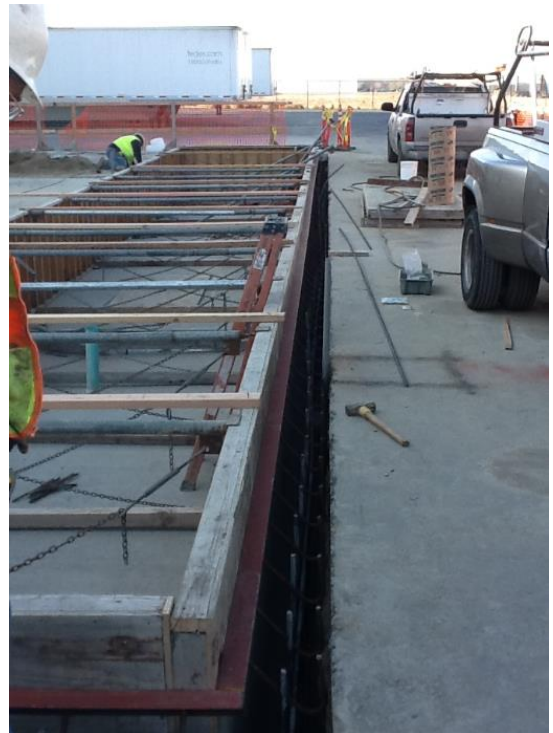
Sincerely,



Chris Devlin



Pictures of Scale Installations



Technical Information Regarding Design of Rice Lake OTR Scale

Rice Lake uses **eleven 12" main I-Beams** in the construction of a 10-foot-wide scale and **twelve 12" main I-Beams placed 12" on centers** in the construction of an 11-foot-wide steel scale. This is significantly more steel than other manufacturers, some of which only use 6" square tubing running down the length of the scale. In addition, the I-Beams are wide-flanged. This minimizes the spacing between the I Beam flanges, allowing the deck plate to have a minimal gap in structural support.

Scales using tubular steel have the problem of water seeping into the interior of the tubing and becoming trapped. We have seen new scales with tubular steel construction drip water from the inside for 2 -3 days after being delivered from the factory.

The quality of the OTR construction is the best in class. The manhole cover (on a pit-type, concrete deck installation) is constructed from ½" thick deck plate and uses 1" x 2" flat bar for the cover's support – most other manufacturers use ¼" plate with 3/8" flat bar as support. Their concrete deck loadcell cover plate stiffeners are 1" flat bar welded on vertically, while almost every other manufacturer uses 3/8" flat bar stiffeners welded on vertically or flat. Another example is Rice Lake uses 12" main beams as compared to 10" or 8" beams used by others.



The concrete deck OTR has two outer 12" main beams, so it does not rely solely on the concrete for its structural integrity. The concrete deck version has 6" support beams running down the entire length of the scale to support the deck; additionally, a continuous 3/16" deck plate is welded to the underside of the scale to minimize deflection. The total weight of a 70' x 10' wide steel deck Rice Lake OTR scale is approximately 29,600 lbs., as compared to others at 23,000 lbs. and as little as 18,000 lbs. The 70' x 11' wide steel deck scale has a total weight of approx. 32,760 lbs. and is constructed with a 5/16" thick deck plate. The structural strength of the OTR is the best in the industry.

On our first few installations, each of the technicians involved with the installations was impressed with the quality and material used in the construction, and was asking questions such as, "How can Rice Lake do this and still be competitive? This is unbelievable". Now, when we service competitors' scales, our technicians question why the customers didn't install an OTR to begin with. Concrete contractors and project managers have made similar unsolicited comments.

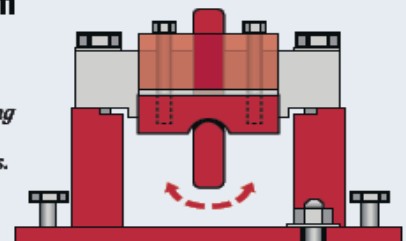
Another significant feature unique to the Rice Lake Survivor Series truck scales is their patented G-Force single link suspension. The single link suspension eliminates the need for bumper bolts or check rods. Most scales depend on bumper bolts to restrict scale movement, or check rod/restraint systems to prevent scale movement. Issues such as thermal expansion, bumper bolts rubbing the bumper plates, check rods getting bent, check rods stands pulling out of the concrete, and restraint flexure straps breaking cause problems and weighing inaccuracies. A few manufacturers are 100% dependent on bumper/checking systems to keep their scales from falling over. On these scales, if the restraint system allows too much movement, the loadcells will tip over.

Rice Lake's G-Force single link suspension works like a pendulum. This system self-checking works because the force of a vehicle stopping on the scale acts to lift the scale, and gravity brings the scale back to rest. In our years of experience, scales using a link design suspension have proven to be the most reliable, accurate, and trouble free. Rice Lake's OTR meets these criteria and has the bonus of being 100% independent of a checking system, a definite plus for any owner of an OTR.



G-Force[®] **Patented self-checking mounting system**

Exclusive design sets an entirely new standard for performance, efficiency and durability. The G-Force mount system eliminates excess movement and scale wear by using 100% of the gravity force from the loading action against itself— instantaneously returning the scale to dead center without check rods or bumper bolts. The result? Faster processing, consistent accuracy and less maintenance.





The entire understructure of the scale is undercoated with an asphaltic coating. This significantly increases the scale's life in your environment as compared to others because it drastically reduces the deterioration of the steel.



The OTR scale has an overlapping and interlocking joint design between panels which provides a significantly stronger joint than other models that use bolts to attach the panels together, which often shear after years of stress.

The center bridges on multi-paneled scales are constructed similarly. Should you ever desire to extend the length of the scale, we can simply move the end panel and add new weighbridge(s) in the center as desired.

A few other features which set the OTR apart from the competition include:

- The OTR has an unbelievable CLC (Concentrated Load Capacity) rating of 50 tons. This is possible because of the structural integrity and the design of the scale. Most manufacturers have a 30- or 35-ton CLC rating, with a few going up to 40-ton CLCs. The 50 Ton CLC rating of the OTR reinforces the quality of construction.
- The OTR uses 75,000 lb. capacity load cells vs. 50,000 lb. and 60,000 lb. load cells used by most other manufacturers
- In a 70-foot scale, the OTR has so much structural integrity it can span the 70-foot distance using 3 modules with 8 loadcells, as compared to 4 modules with 10 loadcells used by many others. This reduces the number of vital components which may need replacing in the future.
- The OTR loadcell cables are routed through conduit raceways and through sealed compartments to prevent rodent damage to the cables. Any non-loadcell compartment is sealed off from the underside of the scale via steel plating. The steel plating has a weep hole to allow rainwater to pass through. This is a feature we have not seen on any other scale. Several of our customers have had rabbits chew loadcell cables in non-sealed compartments, and we then have to go through the expensive process of pulling back the loadcell cables and route them through new flexible steel conduit to provide rodent protection. The OTR has this protection from the factory.
- The OTR loadcell cables in a 70-foot scale are all routed to a single junction box, reducing the number of boxes and potential moisture problems. The single box location also reduces calibration time as all section adjustments are in one location versus two locations on most other 70-foot scales. The single junction box is non-metallic, greatly reducing the potential for moisture problems produced by condensation, which occurs with steel junction boxes - especially during rapid temperature changes commonly found in spring and fall. The non-metallic box also eliminates the maintenance of replacing rusty steel boxes. The rule of thumb at Quality Scales Unlimited concerning existing scales using steel junction boxes is to replace them with non-metallic boxes whenever moisture or rusty box situations occur. You don't have to worry about this with a Rice Lake OTR.

When you choose an OTR scale for your project, we strongly believe you will be as pleased as we are with the quality and structural integrity of the product. We don't think you can find a better truck scale value anywhere.

<u>Customer</u>	<u>Location</u>	<u>Description</u>
Acme Transfer Station	Martinez	3 Truck Scales 70' w/ foundation
Acme Transfer Station	Martinez	4 truck Scales 15' w/ foundation
Alexander Moving & Storage	Hayward, CA	Truck Scale 70' w/ foundation
All Waste Inc.	Sacramento, CA	Truck Scale 70'
Alpine Pacific	Hughson, CA	Truck Scale 70'
Alta Equipment Leasing	San Francisco,	2 Truck Scales 70' w/ foundations
Altamont Landfill	Livermore, CA	3 truck Scales 70' w/ foundations
Amador Disposal Co	lone, CA	Truck scale 70'
American Canyon Landfill	Vallejo, CA	Truck scale 70'
American Cooling	Castroville, CA	Truck Scale 70'
American Iron & Metals	Richmond	Truck scale 70'
American Wood Fiber	Marysville, CA	Truck Scale 70' w/ foundation
Arata Western	Fremont, CA	Truck Scale 24' w/ foundation
Arcata Ready Mix	Arcata, CA	Truck Scale 70'
Assoc. Vintage Group	Hopland, CA	Truck Scale 70' w/ foundation
Axner Construction	Redding, CA	Truck Scale 70' w/ foundation
B & J Landfill	Vacaville, CA	3 Truck Scales 70'
Bar Ale Co.	Tule Lake, CA	Truck Scale 70' w/ foundation
Bariani Olive Oil	Sacramento, CA.	Truck Scale 70'
Basalite Block	Dixon, CA	Truck 10' w/ foundation
Basic American Foods	Vacaville, CA	Truck Scale 70'
Baslite Corp.	Carson City, NV	Truck Scale 120' w/ foundation
Baslite Corp.	Carson City, NV.	Truck Scale 15' w/ foundation
Bauman Landscape	Richmond, CA	Truck Scale 70"
Bear River Supply	Wheatland, CA	Truck Scale w/ foundation 70'
Ben's Trucking Co.	Red Bluff, CA	2 Truck Scales 70'
Berkeley Recycling Center	Berkeley, CA	Truck Scale 24' w/ foundation
Big Valley Lumber Co.	Neubieber, CA	Truck scale 70'
Blue Line Transfer	So. San Francisco	Truck Scale 30' w/ foundation
Blue Line Transfer	So. San Francisco	2 Truck Scales 70' w/ foundations
Blue Ridge Rock	Cloverdale, CA	Truck Scale 70'
Brisbane Recycling	Brisbane, CA	Truck Scale 70'
Britt Lumber	Arcata, CA	Truck Scale 70'
Brown & Root	Dumphy, NV	2 Truck Scales 24'
Brown Sand Co.	Lathrop, CA	Truck Scale 70'
Browning Ferris Ind.	Fresno, CA	Truck Scale 70'
Browning Ferris Ind.	Fresno, CA	Truck Scale 70'
Browning Ferris Ind.	Milpitas, CA	2 Truck Scales 70'
Cain Cellars	St Helena, CA	Truck Scale 24' w/ foundation
CAL Farms	Gonzales, CA	Truck Scale 30'
Cal Sierra Disposal Co.	Sonora, CA	Truck Scale 40'
Cal Sierra Disposal Co.	Sonora, CA	Truck Scale 35'
Cal Sierra Disposal Co.	Sonora, CA	Truck Scale 70' w/ foundation
California Glass Recycling	Fontana, CA	Truck Scale 70'
California Glass Recycling	Sacramento, CA	Truck Scale 70'
Cardox Corp	Walnut Creek, CA	2 Truck Scales 70' w/ foundation
Carmel Marina Corp.	King City, CA	Truck Scale 70'
Carneros Creek Winery	Napa, CA	Truck Scale 24' w/ foundation
Castoro Cellars	Paso Robles, CA	Truck Scale 70' w/ foundation
Castoro Cellars	Paso Robles, CA	Truck Scale 40'
Catlett Whse	Pleasant Grove,	Truck scale 70' w/ foundation

Charter Oaks Almonds	Arbuckle, CA	Truck Scale 70'
Chateau Bouchaine	Napa, CA	Truck Scale 24' w/ foundation
Circosta Metals	San Francisco,	Truck Scale 70' w/ foundation
City Garbage	Eureka, CA	Truck scale 30'
City Garbage	Eureka, CA	Truck Scale 70' w/ foundation
City of Berkeley	Berkeley, CA	Truck Scale 24' w/ foundation
City of Mountain View	Mountain View, C	Truck Scale 30'
City of Paso Robles	Paso Robles, CA	Truck Scale 70'
City of Redding	Redding, CA	Truck Scale 70'
City of Redding	Redding, CA	Truck Scale 70'
City of Santa Cruz	Santa Cruz, CA	Truck Scale 70'
City of Ukiah	Ukiah, CA	Truck Scale 40'
Clear Lake Lava	Clear Lake, CA	Truck scale 70'
Cloverflat Landfill	St. Helena, CA	Truck Scale 70'
Coffee Creek Sand & Gravel	Weaverville, CA	Truck Scale 70'
Concord Naval Weapons	Concord, CA	Truck Scale 70'
Cordoniu Napa Inc.	Napa, CA	Truck Scale 70' w/ foundation
Corn Nuts Co.	Greenfield, CA	Truck Scale 70'
County of Santa Cruz	Ben Lomond, CA	Truck Scale 70' w/ foundation
County of Santa Cruz	Santa Cruz, CA	Truck Scale 70'
Cozad Trailer Co.	Stockton, CA	Truck Scale 14' w/ foundation
Cultured Stone	Napa, CA	Truck Scale 70'
Daly City Scavengers	Daly City, CA	2 truck Scales 70' w/ foundation
Danco Builders	Arcata, CA.	Truck Scale 70' w/ foundation
Davis Waste Removal	Davis, CA	Truck scale 60'
Day & Zimmerman	Hawthorne, NV	Truck Scale 110' w/ foundation
Delicato Vineyards	Manteca, CA	Truck Scale 70'
Delicato Vineyards	Manteca, CA	Truck Scale 70'
Denice & Felice Packing	Hollister, CA	Truck Scale 70' w/ foundation
Diamond Pet	Lathrop, CA.	Truck Scale 70' w/ foundation
ECDC Waste Solutions	San Francisco,	Truck Scale 70'
Eel River Disposal	Fortuna, CA	Truck Scale 40' w/ foundation
Empire Waste Mang.	Santa Rosa, CA	Truck Scale 70' w/ foundation
Enterra, Inc.	Willits, CA	Truck Scale 70'
Ferma Corp	Sunol, CA.	Truck Scale 70'
Gallagher & Burk	Oakland, CA.	Truck Scale 110'
Gallagher & Burk	Oakland, CA.	Truck Scale 130'
George Reed Co.	Escalon, CA.	Truck Scale 70'
Ghilotti Brothers	Navato, CA.	Truck Scale 70'
Golden By Products	Bellico, CA.	Truck Scale 70' w/ foundation
Golden by Products	Ballico, CA.	Truck Scale 70' w/ foundation
Grace Pacific	Honolulu, HI	Truck Scale 70'
Granite Const. Co.	Sacramento, CA.	Truck Scale 110'
Granite Const. Co.	Watsonville, CA.	Truck Scale 70'
Granite Const. Co.	Watsonville, CA.	Truck Scale 70'
Granite Const. Co.	Watsonville, CA.	Truck Scale 130'
Granite Const. Co.	Watsonville, CA.	Truck Scale 140'
Granite Const. Co.	Watsonville, CA.	Truck Scale 70'
Granite Const. Co.	Watsonville, CA.	2 Truck Scale -120'
Granite Const. Co.	Watsonville, CA.	Truck Scale 70'
Granite Const. Co.	Watsonville, CA.	Truck Scale 120'
Granite Const. Co.	Tuscon, AZ.	Truck Scale 110'
Granite Const. Co.	Watsonville, CA.	Truck Scale 90'
Granite Const. Co.	Indio, CA.	Truck Scale 2 - 70'
Granite Const. Co.	Sacramento, CA.	Truck Scale 70'
Granite Const. Co.	Watsonville, CA.	Truck Scale 120'
Granite Const. Co.	Watsonville, CA.	Truck Scale 70'

Granite Const. Co.	Sparks, NV.	3 Truck Scale -115'
Granite Rock Co.	So. San Francisco	Truck Scale 140'
Granite Rock Co.	Aromas, CA.	Truck Scale 70'
Granite Rock Co.	Aromas, CA.	Truck Scale 70'
Granite Rock Co.	Aromas, CA.	Truck Scale 2 -200' w/ foundations
Growers Ice Co.	Salinas, CA.	Truck Scale 70' w/ foundation
H S S Recycling Co.	Santa Maria, CA.	Truck Scale 70'
Hans Hilleby Farms	Woodland, CA.	Truck Scale 70'
Hexion Chemical	Fremont, CA	Truck Scale 70' w/ foundation
Hot Rocks	Cloverdale, CA.	Truck Scale 70'
Hughson Chemical	Hughson, CA	Truck Scale 70' w/ foundation
Humboldt County	Eureka, CA.	Truck Scale 70'
Hunewell	Winnemucca, NV	Truck Scale 106'
Hutchens Paving	Redding, CA.	2 Truck Scale - 70'
J & O Tire	Oakland, CA.	Truck Scale 16-16-40' w/ foundation
J. F. Shea Co.	Redding, CA.	Truck Scale 70'
J. Lohr Vineyards	San Jose, CA.	Truck Scale 30'
J.F. Shea Co.	Anderson, CA	Truck Scale 70'
J.H. Fitzmaurice Const.	Oakland, CA.	2 Truck Scale - 70'
Jones Sand Company	Sacramento, CA.	Truck Scale 70'
Kaiser Sand & Gravel	Pleasanton, CA.	Truck Scale 120'
Kaiser Sand & Gravel	Santa Rosa, CA.	Truck Scale 70'
KBI Construction	Marysville, CA.	Truck Scale 8' w/ foundation
Kendall Jackson	Lakeport, CA.	Truck Scale 70'
Kendall Jackson Winery	Santa Rosa, CA.	Truck Scale 70' w/ foundation
L & D Landfill	Sacramento, CA.	Truck Scale 70'
L & D Landfill	Sacramento, CA.	2 Truck Scale - 70'
L M C Metals	Stockton, CA.	Truck Scale 70'
Larimer & Surian	Susanville, CA.	Truck Scale 70' w/ foundation
Leland Rock Co.	Fortuna, CA.	Truck Scale 70'
Leslie Salt Co.	Newark, CA.	Truck Scale 70'
Lone Star Industries	Fairfield, CA.	Truck Scale 30'
Loomix Corp.	Stockton, CA.	Truck Scale 70' w/ foundation
Luchetti Bulldozing	Ukiah, CA.	Truck Scale 70'
Lynetta Ranches	Alturas, CA.	Truck Scale 80' w/ foundation
Lyngso Materials	Redwood City,	Truck Scale 70' w/ foundation
Maersk Lines	Oakland, CA.	Truck Scale 70'
Manteca Recycling	Manteca, CA.	Truck Scale 30'
Marin Sanitary	San Rafael, CA.	Truck Scale 46'
Mayflower Farms	Arbuckle, CA.	Truck Scale 70' w/ foundation
McCune Sand And Gravel	Mammoth, CA.	Truck Scale 70'
McPhails Bldg. Prod.	Cotati, CA.	Truck Scale 30'
Mendocino Paving	Mendocino, CA.	Truck Scale 70'
Mendocino Paving	Willits, CA.	Truck Scale 70'
Mercer Frazier Co.	Eureka, CA.	Truck Scale 70'
Meridian Vineyards	Paso Robles, CA.	Truck Scale 70' w/ foundation
Mike Morgan Ranches	Brawley, CA.	Truck Scale 70'
Minatta Land Scaping	Cotati, CA.	Truck Scale 30'
Mission Trails Disposal	San Jose, CA.	Truck Scale 40' w/ foundation
Mission Valley Rock	Sunol, CA.	Truck Scale 70'
Mission Valley Rock	Sunol, CA.	Truck Scale 130'
Modesto Sand & Gravel	Ripon, CA.	Truck Scale 70'
Murphy Good Winery	Geyserville, CA.	Truck Scale 70' w/ foundation
Nevada County	Grass Valley, CA.	Truck Scale 70'
Nica Metals	Livermore, CA.	Truck Scale 70'
Niu Const.	Kauai, HI.	Truck Scale 70'
Norcal Systems	Gilroy, CA.	Truck Scale 70'

Norcal Waste Systems	San Francisco,	2 Truck Scale -70' w/ foundation
Norcal Waste Systems	San Francisco,	Truck Scale 70' w/ foundation
Norcal Waste Systems	San Francisco,	Truck Scale 16'
Norcal Waste Systems	San Francisco,	2 Truck Scale - 27'
Northstate Asphalt	Redding, CA.	Truck Scale 70'
Oakland Scavengers Co.	San Leandro, CA.	Truck Scale 70' w/ foundation
Ormsby Landfill	Carson City, NV.	2 Truck Scale - 70'
P & M Cedar Products	Redding, CA.	Truck Scale 70'
Pacific Coast Recycling	San Jose, CA.	Truck Scale 70'
Peninsula Building Material	Sunnyvale, CA	Truck Scale 40' w/ foundation
Pine Grove Ranches	Orrada, NV.	Truck Scale 60'
Pleasanton Disposal	Pleasanton, CA.	2 Truck Scale - 70' w/ foundation
Potrero Hills Landfill	Richmond, CA.	2 Truck Scale - 70'
Pozzolan Int.	Milpitas, CA.	Truck Scale 70'
Puritan Ice Co.	Guadalupe, CA.	Truck Scale 70'
R & A Trucking	Oakland, CA.	Truck Scale 10' w/ foundation
R.T. Dovavan	Fernley, NV	Truck Scale 120' w/ foundation
Redwood Valley Cellars	Redwood Valley,	Truck Scale 70' w/ foundation
Resco Construction Co.	Eureka, CA.	Truck Scale 35' w/ foundation
Resco Construction Co.	Eureka, CA.	Truck Scale 65' w/ foundation
Richmond Sanitary Co.	Richmond, CA.	Truck Scale 70'
Richmond Sanitary Co.	Richmond, CA.	Truck Scale 70'
Richmond Sanitary Co.	Richmond, CA.	Truck Scale 70" w/ foundation
Rieff Farms	Woodland, CA.	Truck Scale 70'
River Rock Prod.	Fresno, CA.	Truck Scale 70'
RMC Lonestar	Pleasanton, CA.	Truck Scale 70'
Robert Hall Winery	Paso Robles, CA.	Truck Scale 70' w/ foundation
Rocky Ridge Inc.	Sparks, NV.	Truck Scale 110'
Rural Disposal Co.	Salinas, CA.	2 Truck Scale - 70'
Rural Disposal Co.	Salinas, CA.	2 Truck Scale - 70'
S.J. Amoroso Const.	Foster City, CA.	2 Truck Scale - 70' w/ foundation
S.J. Amoroso Const.	Foster City, CA.	Truck Scale 70' w/ foundation
Salinas Disposal	Salinas, CA.	Truck Scale 70'
Salinas Disposal Co.	Salinas, CA	Truck Scale 70'
Salinas Disposal Co.	Salinas, CA.	Truck Scale 70' w/ foundation
Solano Disposal Service	Fairfield, CA.	Truck Scale 30'
San Benito Ag.	Hollister, CA.	Truck Scale 30' w/ foundation
San Francisco Recycling	San Francisco,	Truck Scale 24' w/ foundation
Scheid Vineyards	Salinas, CA	Truck Scale 70'
Scheid Vineyards	Salinas, CA	Truck Scale 70"
Seghesio Winery	Healdsburg, CA.	Truck Scale 70'
Shamrock Materials	Ukiah, CA.	Truck Scale 70'
Shasta Co. Landfill	Igo, CA	Truck Scale 70' w/ foundation
Shasta County Solid Waste	Red Bluff, CA.	Truck Scale 70'
Shell Oil Co.	Martinez, CA.	Truck Scale 70'
Shelton Transfer	San Jose, CA.	Truck Scale 70' w/ foundation
SMURFIT Recycling	Santa Clara, CA.	Truck Scale 80' w/ foundation
SMURFIT Recycling	San Jose, CA.	Truck Scale 30' & 80'
Soferval Inc.	Union City, CA.	Truck Scale 60'
Soiland Co.	Santa Rosa, CA.	Truck Scale 70'
Solid Waste Of Willits	Willits, CA.	2 Truck Scale - 12' w/ foundation
Solid Waste Of Willits	Willits, CA.	Truck Scale 70'
South Coast Asphalt	Carlsbad, CA.	Truck Scale 70'
South Coast Asphalt	Carlsbad, CA.	Truck Scale 110'
South Tahoe Refuse	So. Lake Tahoe,	2 Truck Scale -70'
St. Francis Vineyards	Kenwood, CA.	Truck Scale 24' w/ foundation

Stags Leap Cellars	Napa, CA.	Truck Scale 24'	w/ foundation
Stateline Scale	Tule Lake, CA.	Truck Scale 70'	
Sterling Vineyards	Calistoga, CA.	Truck Scale 70'	w/ foundation
Stevens Creek Quarry	San Juan Bautista	Truck Scale 70'	
Super Squirrel	Winters, CA	Truck Scale 70'	
Syar Industries	Healdsburg, CA.	Truck Scale 35'	
Syar Industries	Madison, CA.	Truck Scale 70'	
Syar Industries	Napa, CA.	Truck Scale 70'	
Syar Industries	Napa, CA.	Truck Scale 70'	
Tehema County Landfill	Red Bluff, CA.	Truck Scale 70'	
The Wine Group	Ripon, CA.	2 Truck Scale - 70'	
Thomas Creek Rock	Corning, CA	Truck Scale 70'	w/ foundation
Tide Water sand And Gravel	Oakland, CA.	Truck Scale 70'	
Tosco Refinery	Martinez, CA.	Truck Scale 70'	
Tri Con Steel Supply	Fremont, CA.	Truck Scale 10'	w/ foundation
TRi-City Rock	Fremont, CA.	Truck Scale 30'	
Trinidad Bean and Elevator	Westley, CA.	Truck Scale 70'	w/ foundation
True Leaf Farms	King City, CA	Truck Scale 70'	
Universal Forest Products	Thornton, CA.	Truck Scale 12'	w/ foundation
Urban Resources	Richmond, CA.	Truck Scale 70'	w/ foundation
Valley Recycling Co.	San Jose, CA.	Truck Scale 70'	
Vintage Group	Hopland, CA.	Truck Scale 70'	w/ foundation
Vinwood Cellars	Healdsburg, CA.	Truck Scale 70'	
Von Euw Trucking	Fremont, CA.	Truck Scale 70'	
Walker Street Limited	Watsonville, CA.	Truck Scale 70'	
Waste Management	Fresno, CA.	Truck Scale 70'	w/ foundation
Waste Management Co	Richmond, CA.	Truck Scale 40'	
Waste Management Co.	Livermore, CA.	3 Truck Scale - 70'	
Waste Management Co.	Livermore, CA.	2 Truck Scale - 70'	
Waste Management Co.	Fremont, CA.	Truck Scale 70'	w/ foundation
Waste Management Co.	Fremont, CA.	Truck Scale 40'	w/ foundation
Waste Management Co.	Oakland, CA	Truck Scale 70'	w/ foundation
Waste Management Inc.	Oakland, CA.	Truck Scale 46'	
Wesco Trailer	Woodland, CA	Truck Scale 40'	
West Side Agg.	Redding, CA	Truck Scale 70'	
Western Collide	Oakland, CA.	Truck Scale 70'	w/ foundation
Wild Oak Vineyards	Kenwood, CA.	Truck Scale 80'	w/ foundation
Wolfe Transfer	Las Vegas, NV.	3 Truck Scale - 12'	w/ foundation
Yolo County Landfill	Woodland, CA.	Truck Scale 70'	w/ foundation
Zamaroni Quarry	Santa Rosa, CA.	Truck Scale 60'	
Zanker Resorce Mgmt	San Jose, CA.	Truck Scale 30'	w/ foundation
Zanker Resorce Mgmt	San Jose, CA.	2 Truck Scale - 70'	w/ foundation