

**Board of Directors Meeting**

April 19, 2024

2023 MSW Waste Characterization Study

Presented by

David Ramirez, P.E.
Director of Engineering and Compliance
ReGen Monterey

Prepared by

Caty O'Connor, P.E.
Assistant Engineer
ReGen Monterey

1



Presentation of

2023 MSW Waste Characterization Study**July 2023: the Board Approved MSW Waste Characterization Study**

2



Presentation of
2023 MSW Waste Characterization Study

What is MSW?



3



Presentation of
2023 MSW Waste Characterization Study

MSW is Taken Directly to the Landfill



4

What is a Waste Characterization Study?



5



6



Presentation of
2023 MSW Waste Characterization Study

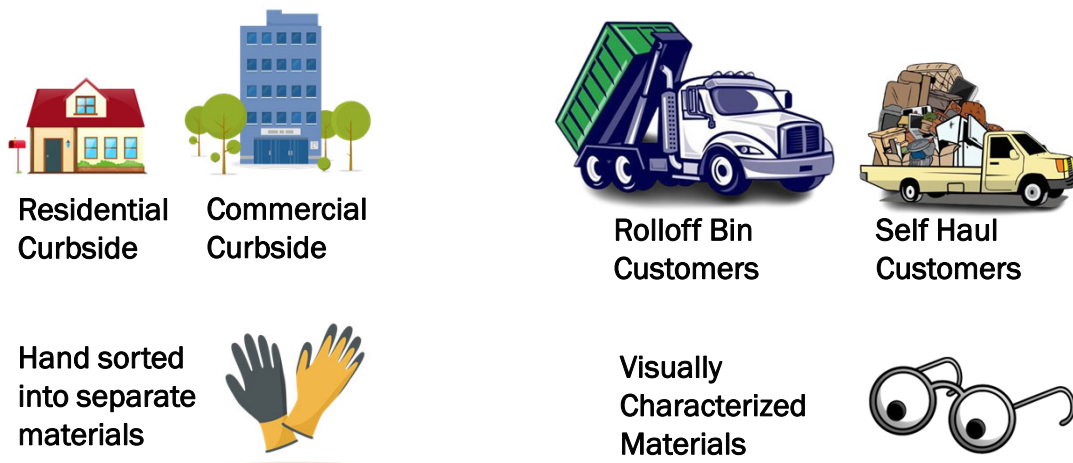


7



Presentation of
2023 MSW Waste Characterization Study

Waste Characterization Customer Types and Sort Methodology



8



Presentation of
2023 MSW Waste Characterization Study



Residential Waste Characterization



How is the Data Used?

- Inform **infrastructure planning**
- Inform **community outreach needs**
- Provide 2023 snapshot of solid waste **disposal behavior** to, in part, monitor SB1383 implementation and adoption progress

Material Components	Composition	+/-	Annual Tons
PAPER	8.9%	0.5%	3,192
Uncoated Corrugated Cardboard	0.9%	0.2%	320
White Office Paper	0.4%	0.1%	130
Mixed Paper	3.0%	0.3%	1,090
Paper Board	1.5%	0.1%	550
ONP	0.3%	<0.1%	110
Aseptic Lined Containers	0.2%	<0.1%	70
Plastic Lined Paper	2.4%	0.2%	860
Gable-top Containers	0.2%	<0.1%	62
PLASTIC	6.0%	0.3%	2,150
PET	0.4%	<0.1%	160
PET Thermoform	1.1%	<0.1%	390
Natural HDPE	0.2%	<0.1%	60
Pigment HDPE	0.3%	<0.1%	90
Polypropylene #5	1.2%	<0.1%	430
Mixed Plastic #3,4,6,7	0.3%	<0.1%	110
Polystyrene	0.3%	<0.1%	110
Film Plastic	1.4%	0.1%	500
Rigid Plastic	0.8%	0.1%	300
METAL	1.9%	0.2%	690
Bi Metal	0.5%	<0.1%	180
Ferrous Metal	0.4%	0.1%	150
Aluminum	0.2%	<0.1%	90
Aluminum Other	0.7%	<0.1%	270
GLASS	2.4%	0.3%	860
Mixed Glass	2.4%	0.3%	860

Material Components	Composition	+/-	Annual Tons
ORGANICS	33.1%	1.6%	11,949
Perishable Edible Food	2.0%	0.4%	730
Shelf Stable Edible Food	1.3%	0.3%	460
Inedible Food Scraps (NO meat or dairy)	13.7%	1.1%	4,930
Inedible Meat Products	1.5%	0.4%	550
Inedible Packaged Meat Products	0.6%	0.1%	200
Inedible Dairy Products	<0.1%	<0.1%	9
Inedible Packaged Dairy Products	0.5%	0.1%	180
Raw Meat	0.8%	0.3%	300
Hard-to-Compost Landscape	0.2%	0.2%	70
Yard Debris	2.1%	1.1%	760
Wood Material	0.6%	0.3%	220
Compostable Containers	0.9%	0.1%	340
Food Soiled Paper	8.0%	0.4%	2,880
Treated/Painted Wood Products	0.9%	0.2%	320
HAZARDOUS	1.1%	0.4%	409
HHW	0.3%	0.2%	110
Lithium Batteries	<0.1%	<0.1%	1
Other Batteries	<0.1%	<0.1%	28
Manufactured Products	0.7%	0.3%	270
OTHER	46.7%	1.6%	16,850
Medical Waste	8.8%	0.9%	3,190
Inerts	1.0%	0.2%	360
Organic Textiles	0.5%	0.2%	190
Non-Organic Textiles	3.4%	0.5%	1,240
Refuse	32.9%	1.6%	11,870
TOTAL	100.0%		36,100

Composition based on 93 samples.

9



Presentation of
2023 MSW Waste Characterization Study



SCS ENGINEERS
Environmental Consultants and Contractors



Monterey
City Disposal
Service

2023

SEPTEMBER						
Mo	Tu	We	Th	Fr	Sa	Su
28	29	30	31	1	2	3
4	5	6	7	8	9	10
11	12	13	14	15	16	17
18	19	20	21	22	23	24
25	26	27	28	29	30	1
2	3	4	5	6	7	8

2023

OCTOBER						
Mo	Tu	We	Th	Fr	Sa	Su
25	26	27	28	29	30	1
2	3	4	5	6	7	8
9	10	11	12	13	14	15
16	17	18	19	20	21	22
23	24	25	26	27	28	29
30	31	1	2	3	4	5

10



Presentation of
2023 MSW Waste Characterization Study



11



Presentation of
2023 MSW Waste Characterization Study



12



Presentation of
2023 MSW Waste Characterization Study



13

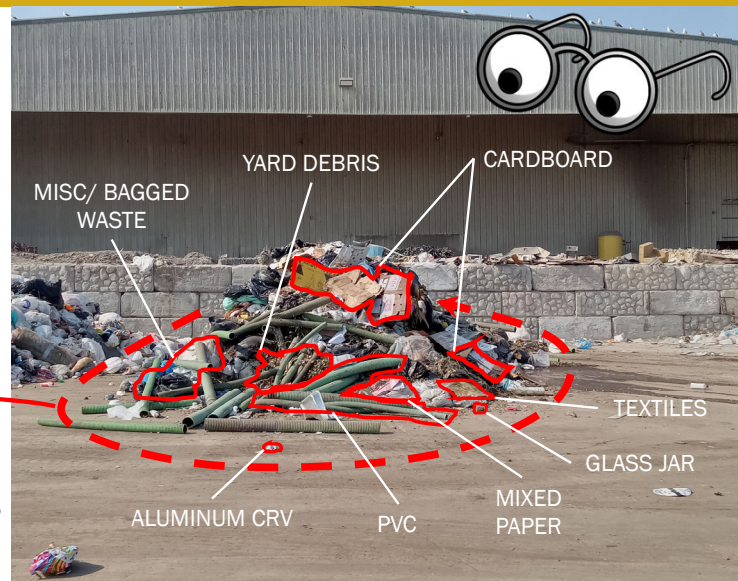


Presentation of
2023 MSW Waste Characterization Study

Visual Characterization Which Sources Included?

- Residential and Commercial waste from **franchise and self-hauled** sources
- Franchise, curb-collected waste, **manually sorted** (Sort Method A) ASTM Standard D 5231-92
- Roll-off, self hauled waste, **visually characterized** (Sort Method B)

$$\begin{matrix} \text{Total} \\ \text{Sample} \\ \text{Volume} \\ \text{(Known)} \end{matrix} \times \begin{matrix} \text{Estimated} \\ \% \text{ Volume} \\ \text{(Per Material Type)} \end{matrix} \times \begin{matrix} \text{Assumed} \\ \text{Density} \\ \text{(Per EPA Value)} \end{matrix} = \begin{matrix} \text{Calculated} \\ \text{Mass} \\ \text{(Per Material Type)} \end{matrix}$$



14



Presentation of
2023 MSW Waste Characterization Study

Roll-off/ Self-haul Visual Characterization

Material Components	Composition	Annual Tons	Material Components	Composition	Annual Tons
PAPER	5.8%	3,290	INERTS	18.3%	10,360
Cardboard	2.4%	1,370	Concrete	3.7%	2,080
Mixed Paper	3.4%	1,920	Brick	0.9%	490
PLASTIC	3.8%	2,170	Rock	1.7%	980
CRV Plastic	0.2%	110	Gypsum Board/Drywall	3.2%	1,790
Rigid Plastics	0.8%	470	Asphalt Roofing	6.4%	3,640
Remainder Plastics	0.9%	490	Asphalt Paving	0.1%	70
PVC Pipe or Products	0.6%	320	Soil	1.2%	690
Plastic Film	1.4%	780	Tires	<0.1%	30
METAL	3.8%	2,180	Mattresses/Box Springs	0.4%	240
CRV Aluminum	0.2%	100	Carpet/Carpet Padding	0.6%	350
Non-Ferrous Metals	2.1%	1,170	DONATABLE	0.9%	530
Ferrous Metals	1.0%	540	Furniture Donatable	0.5%	290
Rebar	<0.1%	30	Building Materials	0.3%	180
Other Metal	0.3%	160	Rec. Equipment	<0.1%	50
White Goods	0.3%	180	Other	<0.1%	10
GLASS	1.5%	840	HAZARDOUS	6.0%	3,410
Glass Containers/Jars	0.9%	500	HHW	0.1%	60
Glass Other	0.6%	340	Manufactured Products	5.9%	3,350
ORGANICS	27.1%	15,290	OTHER	32.6%	18,430
Yard Debris	8.8%	5,000	Textiles	0.5%	280
Food Scraps	2.1%	1,210	Furniture	1.0%	550
Engineered Wood	7.9%	4,480	Insulation	0.2%	120
Other Wood	1.2%	680	Medical Waste	<0.1%	40
Clean Dimensional Lumber	0.6%	340	Bulky Waste	1.0%	570
Clean Pallets and Crates	1.8%	1,020	Miscellaneous/Bagged Waste	29.9%	16,870
Treated/Painted Wood	2.9%	1,660	TOTAL		56,500
Hard-to-Compost Organics	1.6%	900	Composition based on visual characterization of 105 waste loads.		

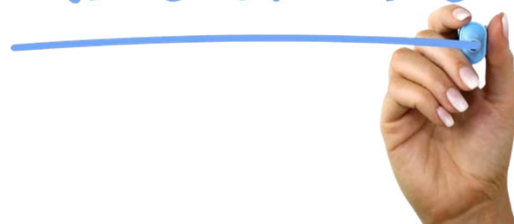


15

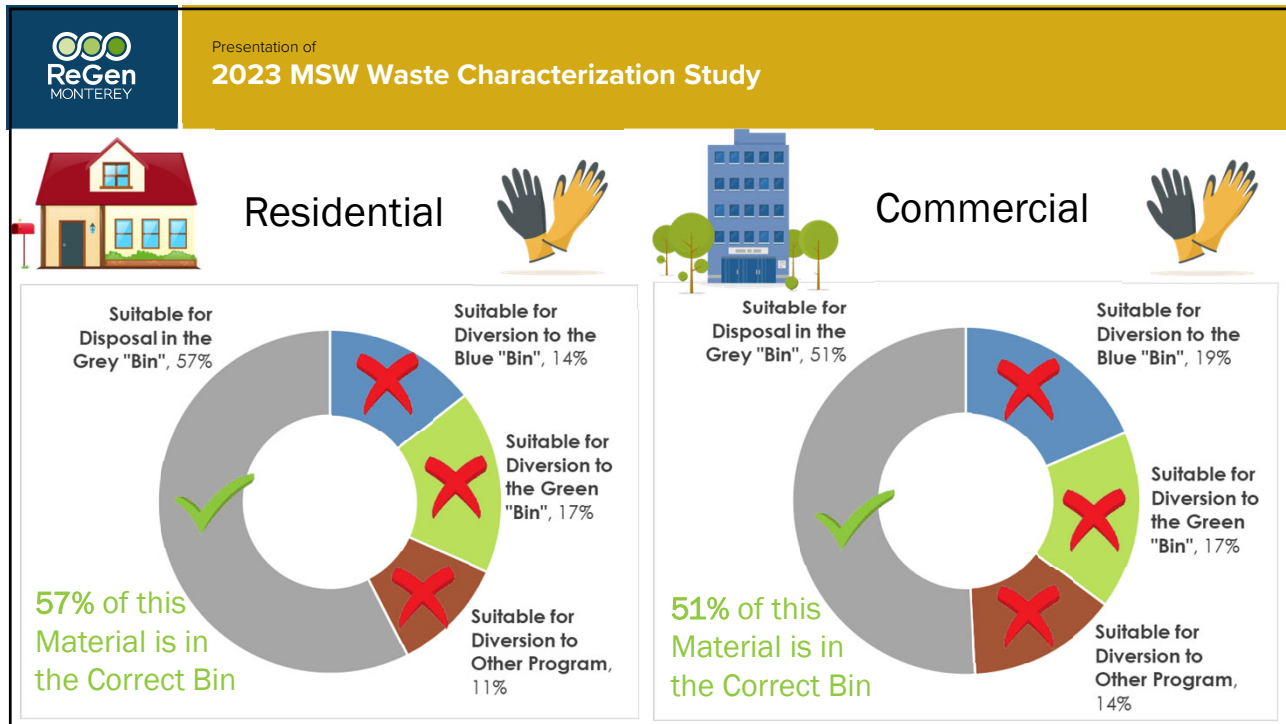


Presentation of
2023 MSW Waste Characterization Study

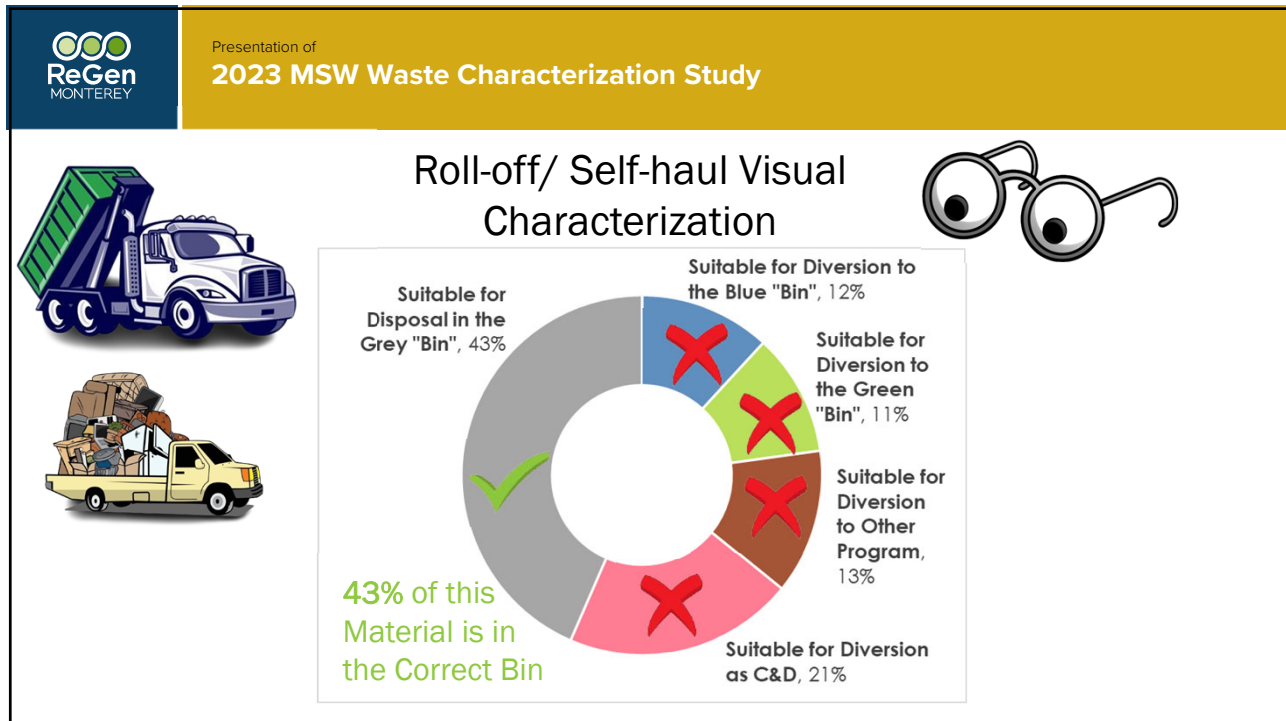
RESULTS



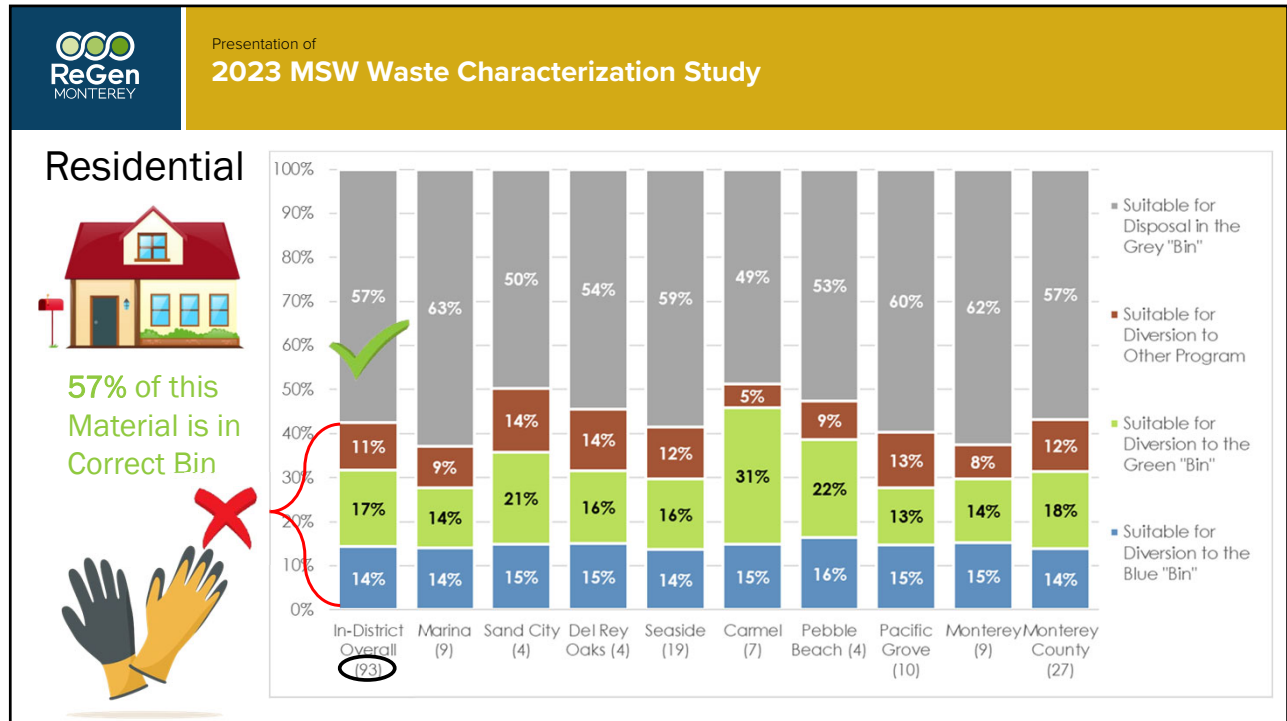
16



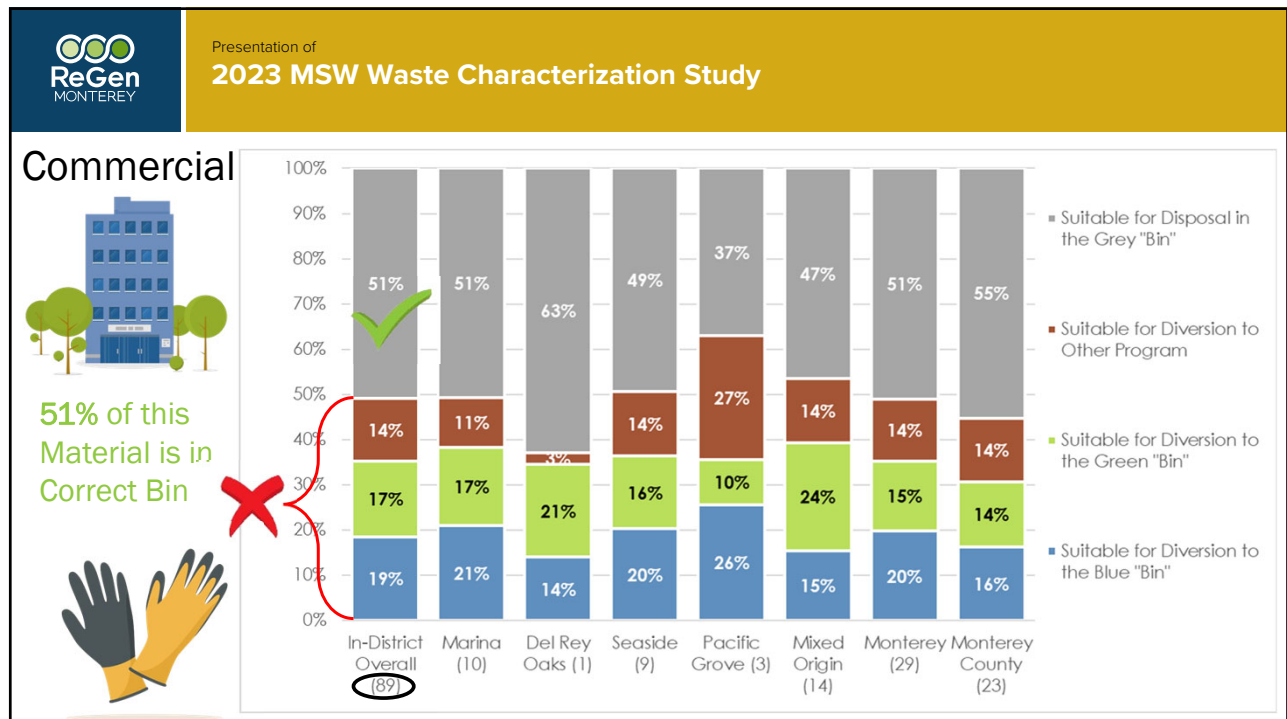
17



18



19



20